



SPUTNIK[®]

Unplug and Play[™]



Unplug and Play[™]

Sputnik[®] provides an open, standards based software platform that enables rapid, cost-effective wireless broadband deployment and lower ongoing operational costs.

Sputnik's tightly integrated platform enables plug-n-play provisioning of edge devices, real-time authentication, subscriber and network management. Customers can deploy in multiple locations and centrally manage their wireless networks from any Web browser.

Sputnik Architecture

Sputnik's software architecture consists of embedded software running on wireless Access Points (APs) at the edge of the network that communicates with server software to centralize wireless network control. Sputnik's open, standards based platform is architected for rapid applications delivery and flexible integration with back-end systems.

- ☞ Multi-domain Architecture:
Secure management of multiple customers within distinct administration environments
- ☞ Rapid Application Delivery:
New applications and devices are supported without modification of existing software
- ☞ Internet-based Device Management Architecture:
Management of APs connected behind firewalls, on private LANs or on any network with a route to the Internet

Sputnik Control Center Server Software provides a secure, Web-based interface to centrally provision and manage wireless networks.

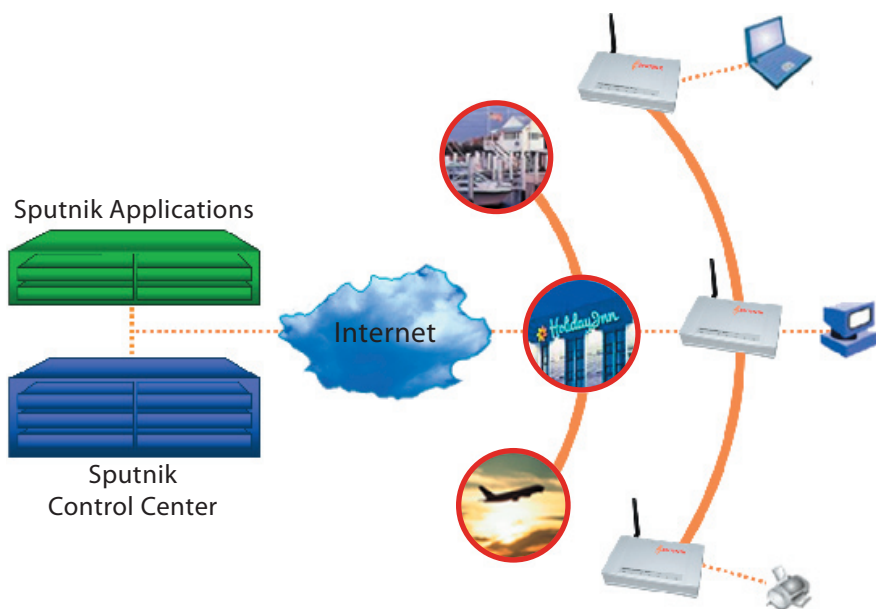
- ☞ Real-time monitoring, management and remote upgrades
- ☞ Management of end-user authentication
- ☞ Track bandwidth usage by AP and end-user
- ☞ Set network policies per AP and user group

Sputnik Agent[™] Software, running on wireless APs enables communications and management between the Sputnik Control Center and the wireless edge.

- ☞ Redirects authentication of users and devices
- ☞ Enforces user-specific and location-based network policies
- ☞ Reports real-time network usage data

Sputnik Applications can be seamlessly added to the existing platform to increase business revenue and functionality.

- ☞ Pre-paid Card for billing or time-limited access
- ☞ RADIUS authentication
- ☞ Device-based authentication via MAC address
- ☞ Pre-authentication links to multiple payment options



A Sputnik- Powered Network

Plug-n-play Provisioning: Out of the box plug in functionality: APs running the Sputnik Agent™ can be deployed wherever needed. They initiate authenticated communications over the Internet with Sputnik Control Center, and are thereafter under remote management and control.

Centralized Management: Manage multiple APs and subscribers over the Internet through a Web browser. No on-location technical expertise required for network setup or operations.

Security: Nobody gets access to the wireless network without authenticating. Different network policies can be applied to limit access based on group affiliation. Supports SSL-encrypted HTTP traffic, Corporate VPNs, WEP and WPA.

Reporting and Data Mining: Real-time and historical reporting and statistics on subscribers, bandwidth usage, location, usage patterns.

Scalability: The Sputnik Control Center manages hundreds to thousands of locations and APs. Start with a small network, and add more locations and APs as the network expands.

Customized Content: Customizable captive portals and location specific content (e.g. walled garden sites); content can be tailored to individual APs.

Sputnik offers secure,
managed wireless
networking with lower
capital costs, lower
operating costs and
greater flexibility than
any alternative.



650 Townsend Street, Suite 320
San Francisco, CA 94103
Tel: (415) 462-5685
www.sputnik.com